



20 Patsys Flat Road Smiths Lake NSW

4  2  2 

Nestled within a captivating setting, this meticulously maintained two-storey residence exudes charm and elegance at every turn. From the intricate details in its construction to the sweeping vistas of the lake and ocean, natural splendor envelops this home, offering a serene and picturesque backdrop. Australian native flora not only enhances its visual appeal but also fosters a habitat for a diverse array of bird species, seamlessly integrating with the environment. It's just beautiful!

Recent upgrades such as re-carpeting upstairs ensure a feeling of 'clean and tidy', and the stunning timber flooring downstairs express timeless quality. Expansive ceilings provide the sense of space, while expansive covered decks on both levels beckon for moments of relaxation and outdoor indulgence.

Price : Guide \$1,299,000

Land Size : 1597 sqm

View : <https://www.pacificpalmsrealestate.com.au/7835655>



Samantha Semmens
02 6554 0500



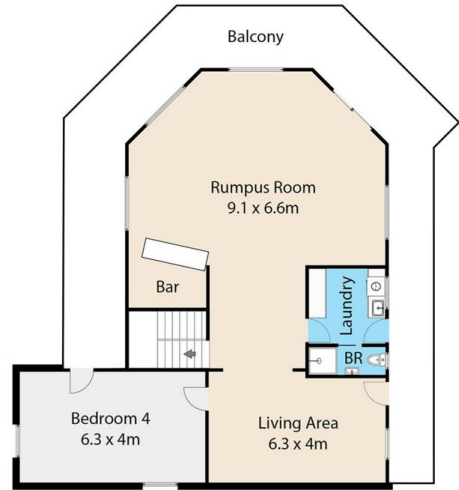
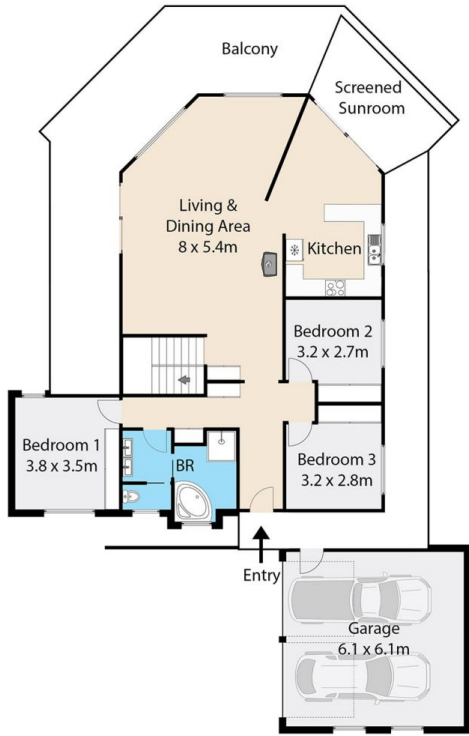
4



2



2



**20 Patsys Flat Rd,
Smiths Lake, NSW 2428**

Internal floor area: 285 m²
Land area: 1568 m²



Plans and dimensions are made as accurately as possible, however these are to be used as a guide and slight variations may be possible.